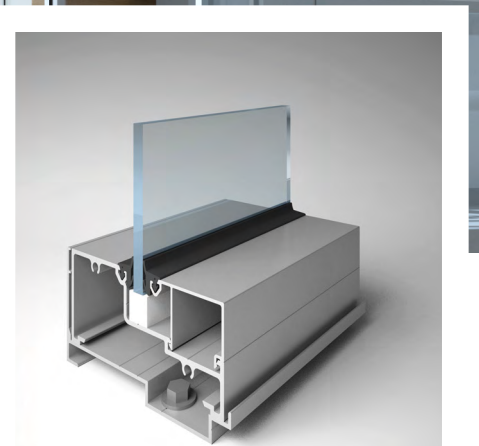


Maintenance Manual

for storefront system

ALT SF450



2023

www.alutech-group.com

Recommendations for technical maintenance and care during operation

1.1 At least once a year, clean elements of the aluminum structures and glass outside. Do not use gasoline, nitro solvents and cleaning agents containing acid, corrosive substances, powder (abrasives), as after their application, the surface loses its shine and becomes rough.

- Perform cleaning and minor repairs of big building surfaces using the equipment that ensure the preservation of the structure, ease and safety of work (for example, swing stages moving along the facade on special guides, vehicles with elevating work platform, scaffold and other similar devices).

1.2 At least once a year, clean elements of the aluminum structures and glass inside. Do not use gasoline, nitro solvents and cleaning agents containing acid, corrosive substances, powder (abrasives), as after their application, the surface loses its shine and becomes rough.

- For the maintenance of gaskets, use silicone-containing substances. It can help not only clean the gasket rubber from dirt, but also restore its elasticity and give water-repellent properties.
- In the absence of special products, clean the gaskets using a soap solution. Then wipe dry the surface after removing the dirt in this manner.

1.3 At least once a year clean the infill and the glass inside by dry, semi-dry, or wet methods: for the dry method use special pastes, which must be applied on the glass and removed from it without subsequent washing; for the semi-dry method, wash the glass after applying the paste; wet cleaning must be performed with clean water or special solvents.

- It is not allowed to use detergents that are aggressive to translucent infill material and sealing elements.

1.4 Ensure the construction dirt and dust are removed from the profile after installation; use non-metallic tapping knives and brushes, remove dust with a vacuum cleaner.

1.5 Be sure to check that the protective film is removed from the profile after installation. The adhesive layer will damage the surface of the anodize coating then exposed to ultraviolet radiation (sun light).

1.6 Use correctors in case of minor mechanical marks on the aluminum surface.

Warnings about the risks of the structure damage

- 2.1 Do not place space heaters and other heat sources with the temperature above 158 °F at a distance less than 9–13/16" to the surface of the storefront.
- 2.2 Do not install any devices and equipment, including heaters on the elements of the aluminum structures from inside.
- 2.3 Do not install any devices and equipment without additional calculation on the elements of the aluminum structures from inside and outside.
- Expose the profile and glass units to high temperature, shock loads, additional static and dynamic effects.
- 2.4 Do not remove ice or frozen snow from the structure.
- 2.5 Do not clean the structure with a knife, blade, glass paper, wire brush and other sharp and abrasive objects.

Technical maintenance and operation

Technical maintenance and operation of integrated windows and doors must be performed in accordance with the requirements of the appropriate document



Product	Glass cleaner
Product type	Highly concentrated glass cleaner
Description	Green viscous liquid
pH value	pH value (conc.) = approx. 8.5 pH value (1%) = 7.5
Article no.	6720-00100 – Bottle, 1 L
Article no.	6720-01000 – Jerry can, 10 L

Properties

Even a small amount of Glasrein (or its analogue) is enough to make sure that it has an excellent cleaning ability to remove such common dirt accumulations as street dust, industrial emission, fingerprints etc. It gives the glass an incredible crystal-clean shine compared to other products and leave no streaks after drying. Glasrein does not contain aggressive components, does not irritate the hand skin and does not spoil the cleaning cloth. It is convenient for rubber gaskets and suitable for washing window profiles made of steel and anodized aluminum, as well as for lacquered wood frames.

Instruction

See the product package for information

Special note

Initially Glasrein was developed as a cleaner for catering companies. However, it has been found that the high requirements set for developers such as intensive cleaning or washing greasy dishes, rinsing glassware without streaks, mirror shine after drying are ideal for window cleaning products. Therefore, today the product is increasingly used by companies that provide window cleaning services and large industrial consumers because of its unique properties that are not achieved with ordinary products. Glasrein not only provides a noticeable visual effect, but also reduces the cleaning time.

Ingredients

- anionic surfactants SAA5 — 15 %;
- non-ionic surfactants SAA — less than 5 %;
- BENZISOTHIAZOLINONE (BIT);
- METHYLISOTHIAZOLINONE (MIT).

Environmental data

The surfactant included in the product is more than 98% biodegradable (in accordance with the OECD control method). The product does not contain phosphates and is registered with the Federal environmental protection agency under the number UBA 0677 0090.

INFORMATION PICTOGRAMS AND SYMBOLS



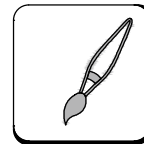
Clean the surface



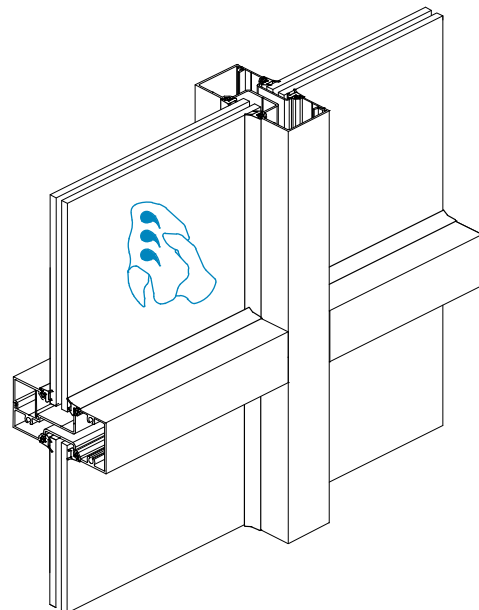
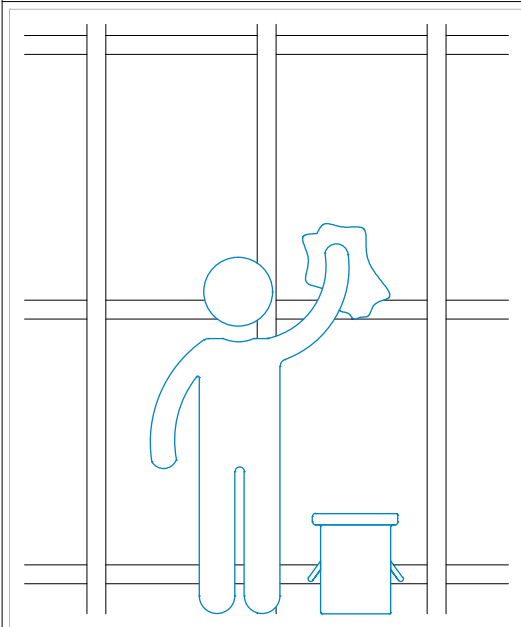
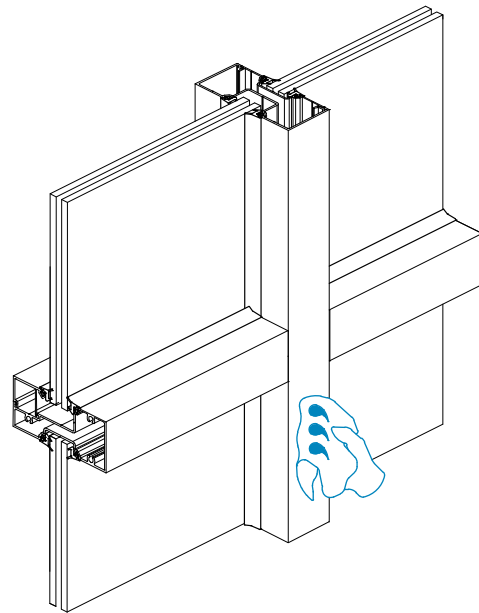
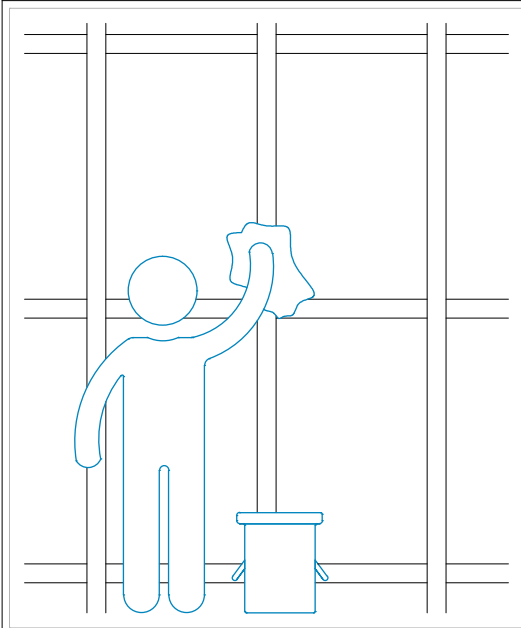
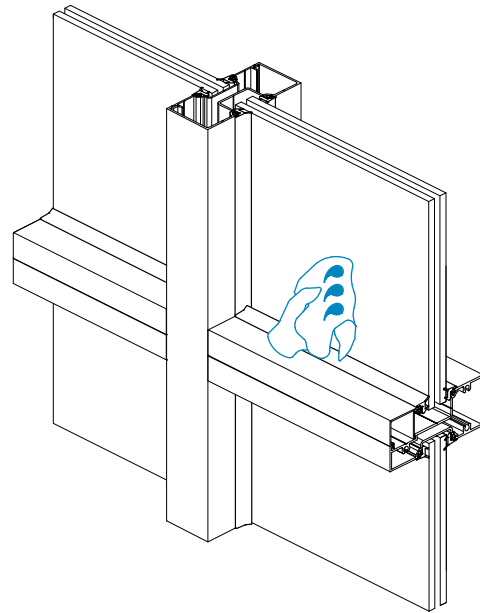
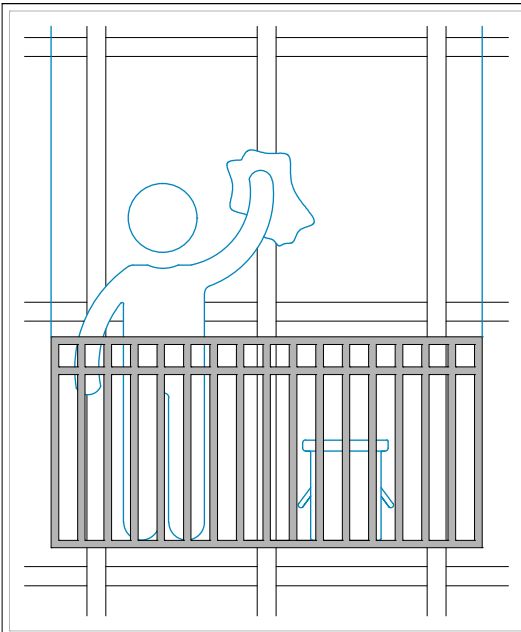
Remove

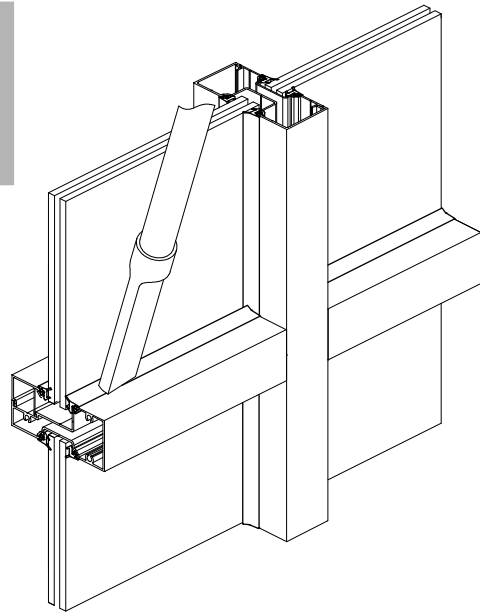
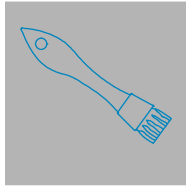
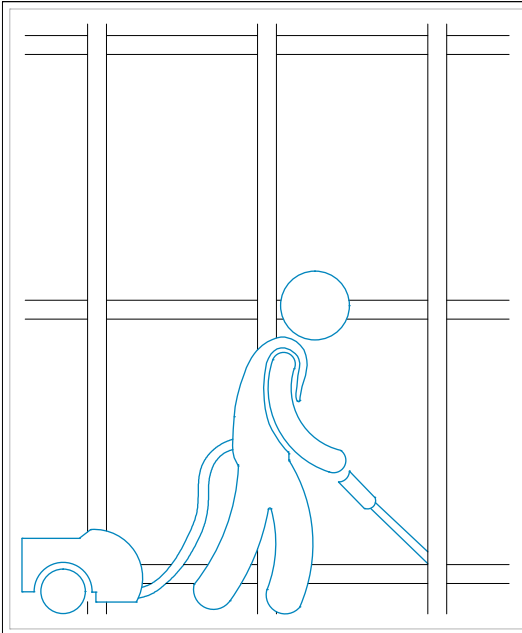


Perform
the indicated operation

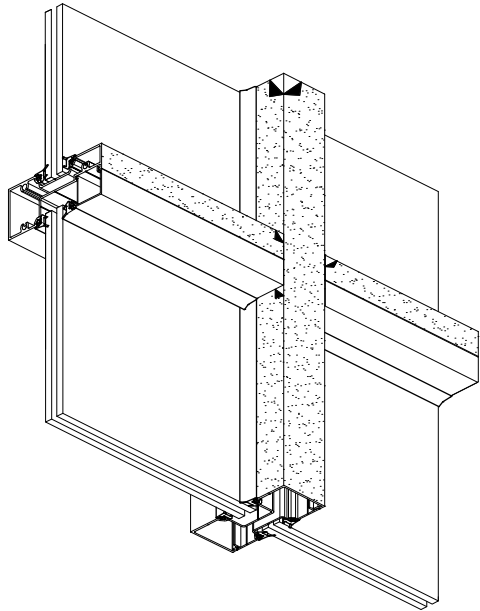
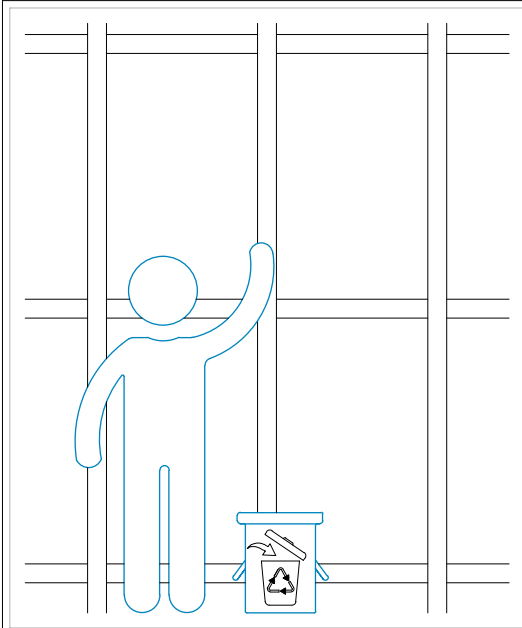


Use a brush

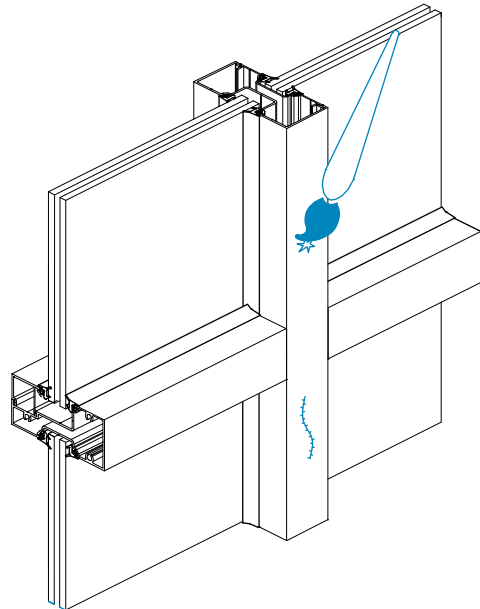
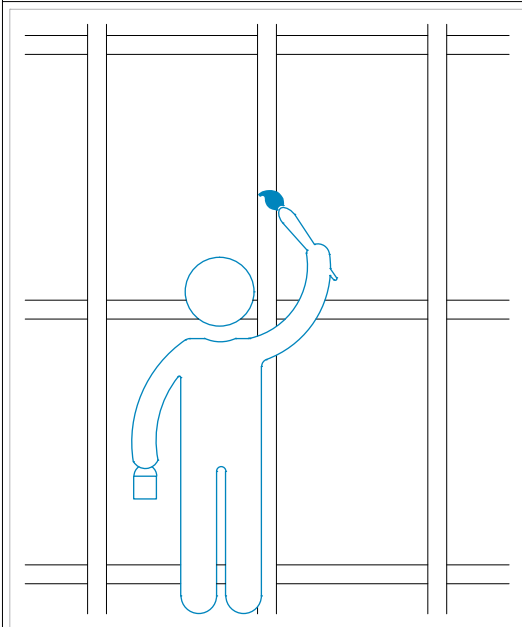




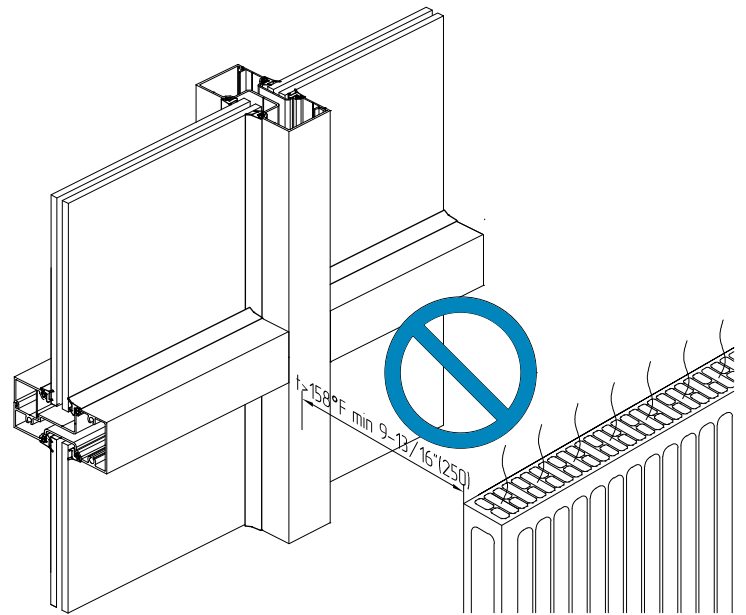
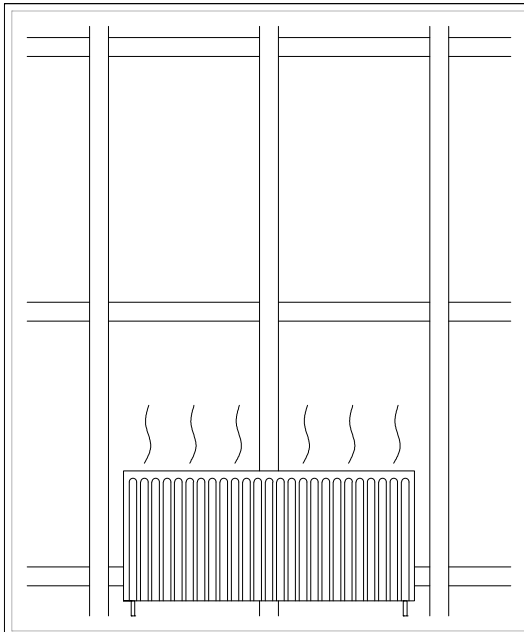
14



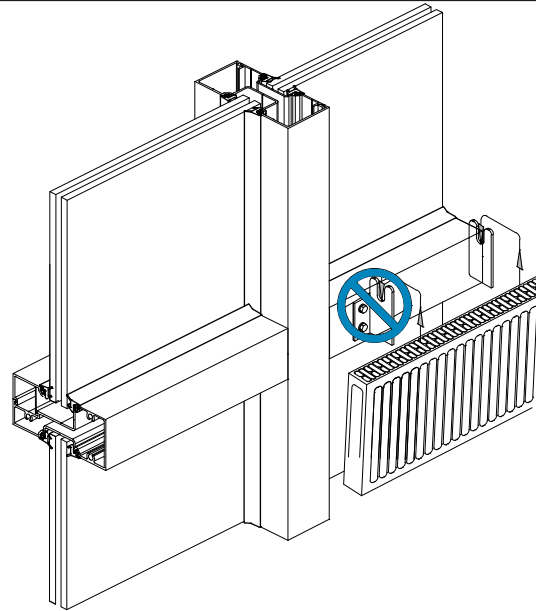
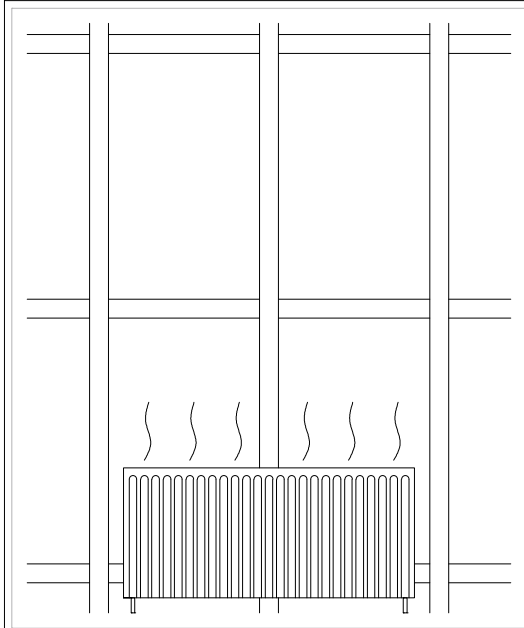
15



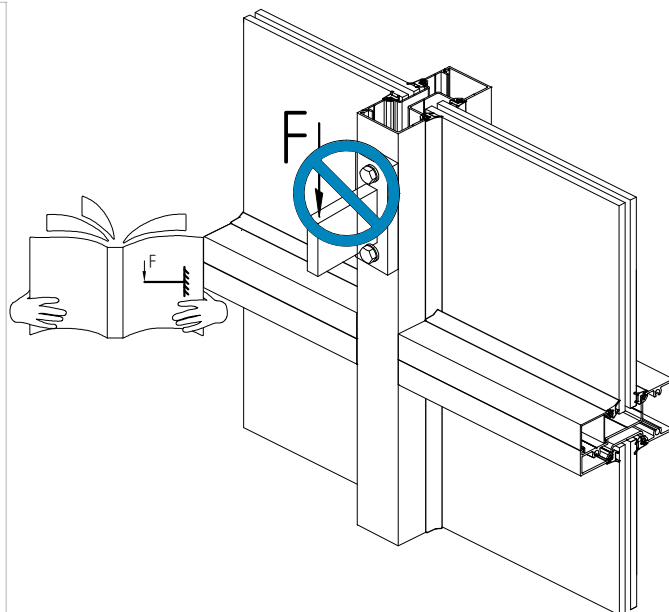
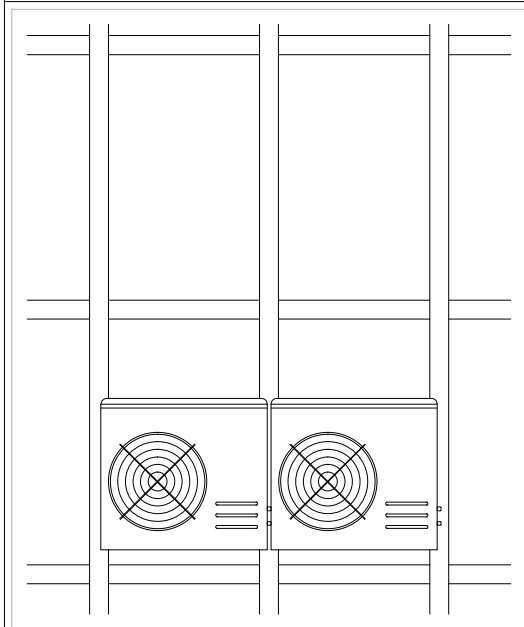
16



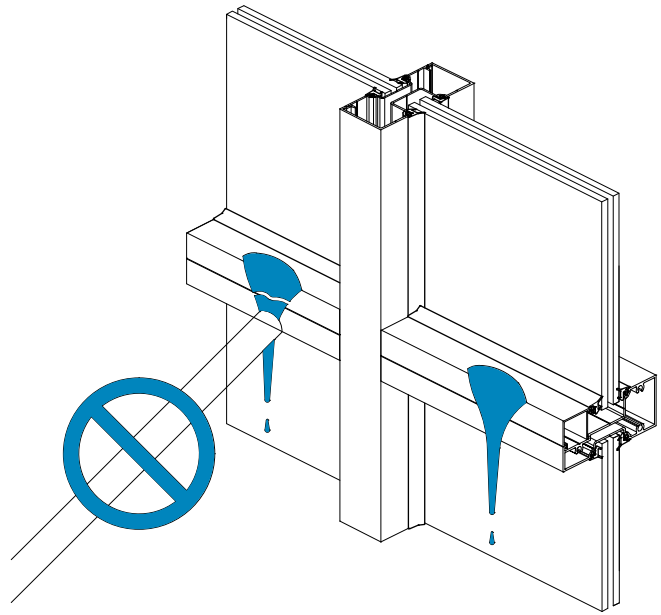
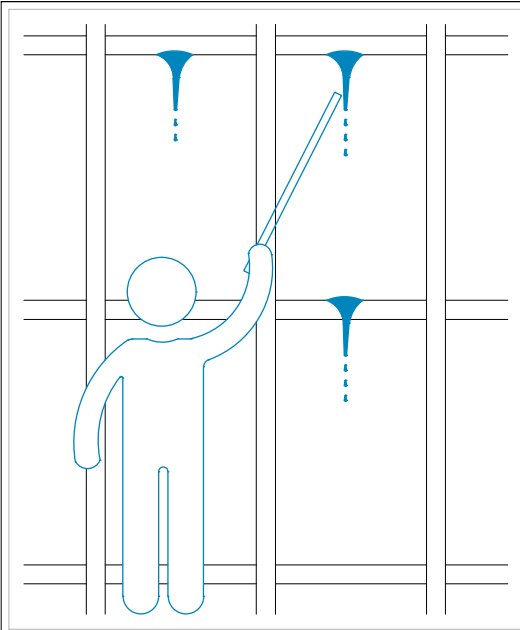
21



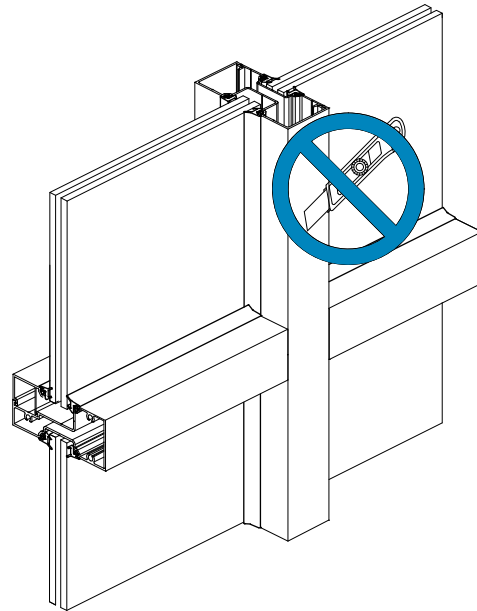
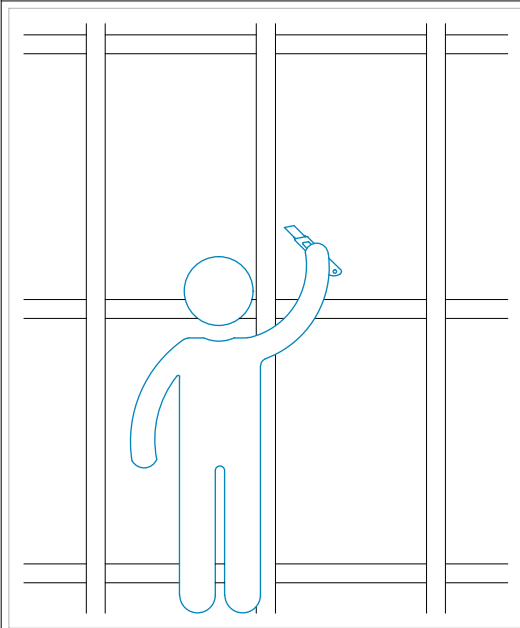
22



23



24



25



AluminTechno JLLC
alusystems@alutech-group.com
www.alutech-group.com

